



# Enabling **Solar Energy** and **Biodiversity** on Flat Roofs

- ✓ RETROFIT
- ✓ LIGHTWEIGHT
- ✓ NO BALLAST NEEDED
- ✓ FAST INSTALLATION
- ✓ EASY MAINTANACE



## WHEN SUSTAINABILITY AND SIMPLICITY MEETS

At Over Easy Solar we believe in harmonizing solar energy and biodiversity on rooftops.

Our innovative PV solution enables you to utilize the full potential of your roof area, **transforming the space into a sustainable rooftop.**

CONTACT US

### OVER EASY SOLAR AS

Filipstad Brygge 1  
0252 Oslo  
Norway

**Email:** [info@overeasy.no](mailto:info@overeasy.no)  
**Phone:** +47 99228200  
**Linkedin:** Over Easy Solar



# xM-2 QUATTRO-200S

## GREEN ROOF SOLUTION



### Retrofit

The xM-2 QUATTRO-200S can easily be **installed straight on top of the vegetation** without the need of intrusive fasteners, base plates or special equipment. Solar panels can now be fully integrated onto the green roof without having to redesign the entire roof or moving the substrate.

# 11 kg

Pr. m<sup>2</sup>

### Lightweight

Our integrated solar energy unit is among the lightest in the market, with only **11 kg per sqm incl. mounting structure, solar modules and cables**. The 3 key components of your PV installation combined into 1 single, lightweight solution - up to 90% lighter than conventional systems in the market pr. installed project.



### Zero Ballast Needed

Removing the need for ballast means cutting **excessive costs, resources and weight** associated with your solar project. The xM-2 QUATTRO-200S is the only solution on the market that removes the need of heavy ballast. The units are both wind certified and tested by **IFI Achen** (Institute of Industrial Aerodynamics) and **Fraunhofer ISE** (Institute of Solar Energy Systems).

# 15 min

Pr. kWp Installed

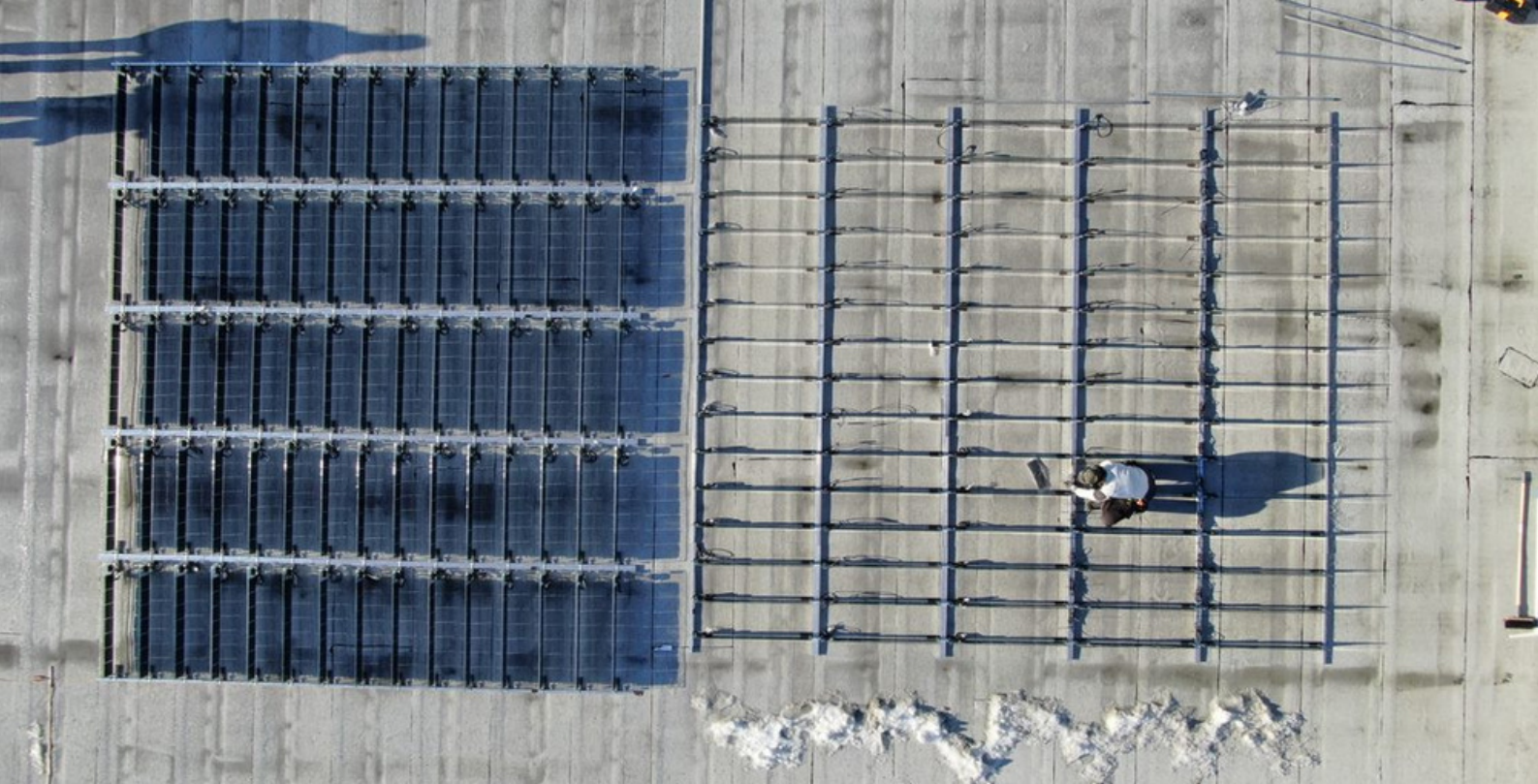
### Fast Installation

With our **Click & go solution**, solar installation has never been faster. Our **prefabricated** units not only reduce the time spent on project planning but also reduce the need of additional **equipment and tools**. With current solutions taking up to 1.5h - 3h pr. kWp installed, we realize your project within 15min pr. kWp installed.

### Easy Maintenance

The vertical bifacial solar unit xM-2 QUATTRO-200S not only reduces the risk of external factors such as **soiling and snow** but also allows for **easy access** to each module during maintenance or inspection.





More info at

[WWW.OVEREASY.NO](http://WWW.OVEREASY.NO)



**OverEasy**  
Solar

GREEN ROOF SOLAR MADE *EASY*

